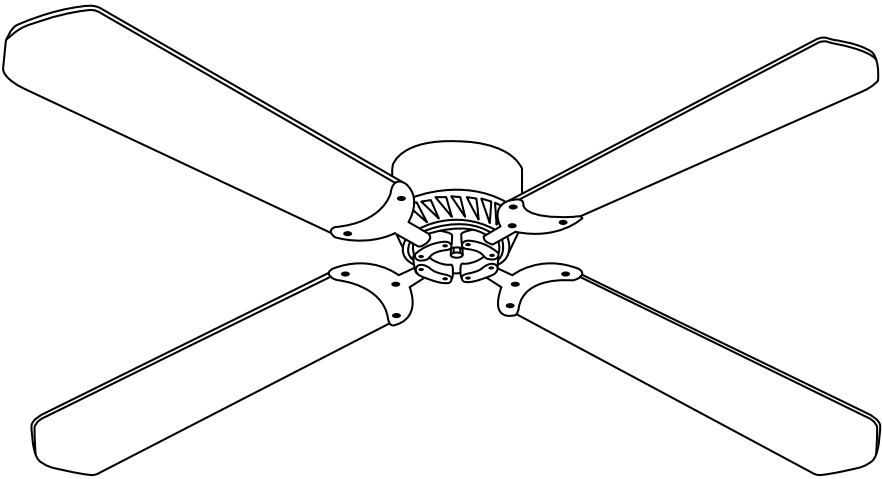




RecPro

12 Volt RV Ceiling Fan

Manual



The Yellow-Green Ground Wire should only be connected to the Chassis Ground or other grounding source as described in the instructions. DO NOT connect this wire to any other wires during the installation process.

SAFETY PRECAUTIONS

1. Before installing the fan, first disconnect the power by turning off circuit breakers or removing the appropriate fuses. Consult a qualified service technician if you are unfamiliar with electrical wiring.
2. Read all instructions and safety information before installing the fan.
3. To reduce the risk of injury, use only the hardware provided when installing the fan.
4. Ensure all electrical connections comply with local codes, ordinances, or National Electrical Codes ANSI/NFPA 70-1999. Hire a qualified electrician if you are unfamiliar with electrical wiring.
5. Mount the fan to a joist or stud that is able to support the weight of the fan when it is in operation, at least 50 lbs.
6. When you are done installing the fan, ensure that all connections are secure to prevent it from falling.

WARNING

1. To reduce the risk of injury, do not bend the fan blade holders when installing the brackets balancing the fan blades or while cleaning the fan.
2. Do not insert any foreign objects between the fan blades while operating.
3. To reduce the risk of fire, electric shock, or personal injury, only mount the fan to an outlet box marked as acceptable for fan support using the screws provided with the outlet box
4. Do not use this fan with any solid-state speed control device.

CAUTION:

1. To reduce the risk of personal injury when mounting to the outlet box, only use the three steel screws and lock washer provided with the fan.
2. Do not install this fan in outdoor areas or areas where the fan may be exposed to high moisture levels or outdoor elements.
3. The fan blades should rise 7.5 feet or more above the floor, or above head height when standing.

INSTALLATION INSTRUCTIONS

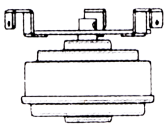
Carefully read, follow, and save these instructions for safe operation and installation.

NOTICE:

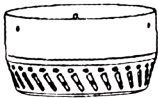
These instructions are intended to be used as a guide only. Proper installation of the fan is the sole responsibility of the user.

Parts List:

- 1. Fan Motor Assembly (1)
- 2. Housing (1)
- 3. Turn Disk (1)
- 4. Blade (4)
- 5. Blade Holder (4)
- 6. Wall Switch (1)
- 7. Blade Holder Screws (9)
- 8. Motor Screws (3)
- 9. Screws With Washers (15)
- 10. Wood Screws (3)
- 11. Wall Switch Screws (2)
- 12. J-Hook (1)
- 13. Wire Caps (4)



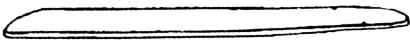
Motor Assembly



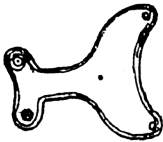
Fan Housing



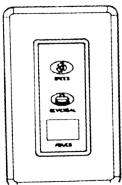
Turn Disk



Fan Blades



Blade Holder



Wall Switch

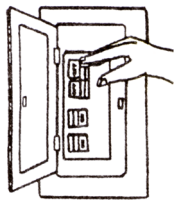
Required Tools & Materials

- 1. Philips Screwdriver
- 2. Flat Head Screwdriver
- 3. Adjustable Crescent Wrench
- 4. Step Ladder
- 5. Wiring Supplies As Required By Local Electrical Codes

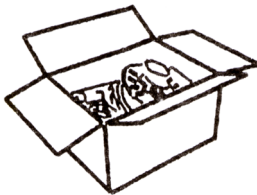
INSTALLING THE FAN

WARNING: To avoid the risk of electric shock, ensure the power is shut off before installing or servicing this fixture.

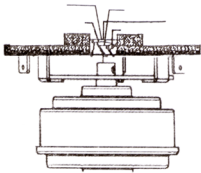
NOTE: Consult local electrical codes for wiring and grounding requirements before installing.



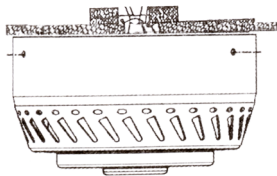
Turn off the electrical power.



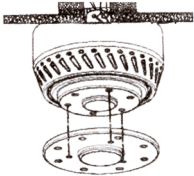
Open the box and spread out all components of the fan, ensuring none are missing. Inspect each component to ensure it is free of damage or defect.



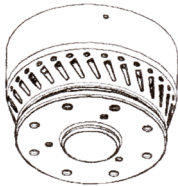
Install the J-hook at the installation location, ensuring it is firmly screwed in. Attach the safety cable to the J-hook. Secure the motor to the installation location using three wood screws.



Slide the housing over the motor, ensuring the arms remain inside the housing. Align the screw holes of the housing and motor and fasten using three screws with washers. Be careful not to cut, pinch, crimp, or damage any wires.



Remove the three motor screws from the bottom of the motor. Place the turn disk over the bottom of the motor, aligning the screw holes and fastening using the previously removed motor screws.



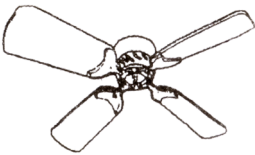
Finished motor housing.



Fasten the fan blade to the blade holder using three screws and washers. Repeat this step for each fan blade.



Remove the blade holder screws from the turn disk. Use these screws to fasten each fan blade holder to the turn disk



Finished ceiling fan.

INSTALLING A 4-WIRE WALL SWITCH:

CAUTION: Connect ONLY to 12v DC power.

1. Choose an appropriate installation location for the wall switch.
2. Cut an appropriately sized opening for the wall switch.
3. Route 12v DC positive and negative wiring up through the opening.
4. Remove the panel from the wall switch.
5. Connect the blue wire from the fan to the blue wire of the wall switch. Secure with a wire cap.
6. Connect the black wire from the fan to the black wire of the wall switch, between the blue and white wire. Secure with a wire cap.
7. Connect the white wire from the fan to the white wire of the wall switch. Secure with a wire cap.
8. Connect the yellow-green wire of the fan to the chassis ground or grounding wire. Secure with a wire cap.
9. Connect the wall switch red wire to positive (+) 12v DC power. Secure with a wire cap.
10. Connect the wall switch black wire, next to the red wire, to negative (-) 12v DC power. Secure with a wire cap.
11. Fasten the wall switch to the installation location using two wood screws.
12. Clip the wall switch panel back onto the wall switch.
13. Turn on the power and check for proper fan operation.
14. Turn on the wall switch.

WALL SWITCH OPERATION:

Speed Control

Press "Speed" on the wall switch.

1 = 100% (High Speed)

2 = 80%

3 = 60%

4 = 40% (Low Speed)

Direction Control

All fans are shipped with the reversing switch positioned to circulate air downward. To reverse the direction and circulate air upward, press "Reversal" on the wall switch. In warmer weather, downward air circulation will produce a cooling breeze. In colder weather, upward air circulation will move stagnant hot air off of the ceiling area.

TROUBLESHOOTING GUIDE

Difficulty operating your new ceiling fan may be the result of incorrect assembly, installation, or wiring. In some cases, these installation, wiring, or assembly errors may be mistaken for defects. If you are experiencing any problems with your ceiling fan, refer to the troubleshooting guide below.

ISSUE	SUGGESTED REMEDY
Fan does not start	<p>CAUTION: Connect the fan to 12v DC power ONLY before turning on the fan.</p> <ol style="list-style-type: none">1.Check the main and branch circuit fuses of circuit breakers.2.Turn off electrical power and inspect all wire connections to the fan and wall switch for incorrect wiring, damage, or defect.3.Ensure the wall switch is in the “On” position.
Noisy operation	<ol style="list-style-type: none">1. Ensure all screws in the motor housing are snug, but do not overtighten.2. Ensure the screws holding the fan blade holder to the turn disk are tight.3. Allow a “break-in” period of 24 hours. Most noises associated with a new fan will diminish after this period.
Excessive wobbling	<p>All fan blades are weighed and grouped by weight. Natural woods vary in density which may cause the fan to wobble even though all blades are weight-matched. The following steps may help reduce or eliminate wobbling.</p> <ol style="list-style-type: none">1. Ensure all fan blades are firmly screwed to the blade holders.2. Ensure all blade holders are screwed firmly to the turn disk.3.Ensure the turn disk is firmly screwed to the motor.4.Ensure the motor is securely fastened to the ceiling.5.Check the distance between the tips of the fan blades, going from opposite blade to opposite blade. All measurements should be equal. Loosen, adjust, and retighten the fan blades if needed.6.Check the distance between the tip of each fan blade and the ceiling. Gently bend the fan blade up or down until all distances are the same.7.If noticeable wobble still persists, switch two adjacent (side by side) fan blades to redistribute weight.

INSTALLING A 3-WIRE WALL SWITCH:

CAUTION: Connect ONLY to 12v DC power.

1. Choose an appropriate installation location for the wall switch.
2. Cut an appropriately sized opening for the wall switch.
3. Route 12v DC positive and negative wiring up through the opening.
4. Remove the panel from the wall switch.
5. Connect the blue wire from the fan to the blue wire of the wall switch. Secure with a wire cap.
6. Connect the yellow-green wire to the Chassis Ground or other grounding source.
7. Connect the white wire from the fan to the white wire of the wall switch. Secure with a wire cap.
8. Connect the wall switch red wire to positive (+) 12v DC power. Secure with a wire cap.
9. Connect the wall switch black wire, next to the red wire, to negative (-) 12v DC power. Secure with a wire cap.
10. Fasten the wall switch to the installation location using two wood screws.
11. Clip the wall switch panel back onto the wall switch.
12. Turn on the power and check for proper fan operation.
13. Turn on the wall switch.

WALL SWITCH OPERATION:

Speed Control

Press "Speed" on the wall switch.

1 = 100% (High Speed)

2 = 80%

3 = 60%

4 = 40% (Low Speed)

Direction Control

All fans are shipped with the reversing switch positioned to circulate air downward. To reverse the direction and circulate air upward, press "Reversal" on the wall switch. In warmer weather, downward air circulation will produce a cooling breeze. In colder weather, upward air circulation will move stagnant hot air off of the ceiling area.