

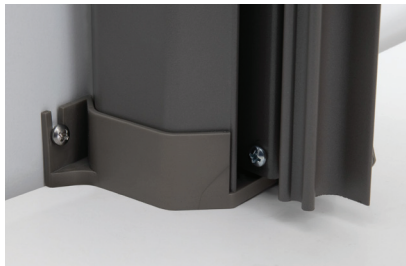
Retractable Shower Door Installation Instructions

Tools & Materials Required

-Philips Screw Driver or Power Drill with Philips Bit

Step 1

Remove paper from the sticky side of the shower door frame and set it into the place where you are wanting the shower door to stand. Secure frame with screws on top and bottom of the door.



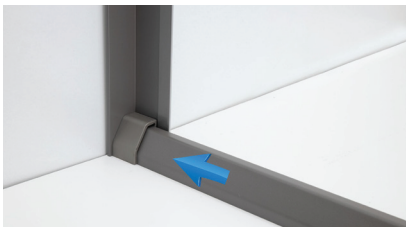
Step 2

Insert bottom rail into the end cap on the door frame, making sure the wheels of the door are in place in the rail. Repeat on the top rail.



Step 3

Insert the rails, both top and bottom, into place on the other side of the door frame. Remove the paper from the sticky side of the door frame and set into place on the other side of the shower door.



****Do not alter the length or width of the shower door, as this will void the warranty and remove eligibility for return.**



806 S. Division St.
Bristol, IN 46507
(574) 848-0405
info@recpro.com