

# RECPRO®

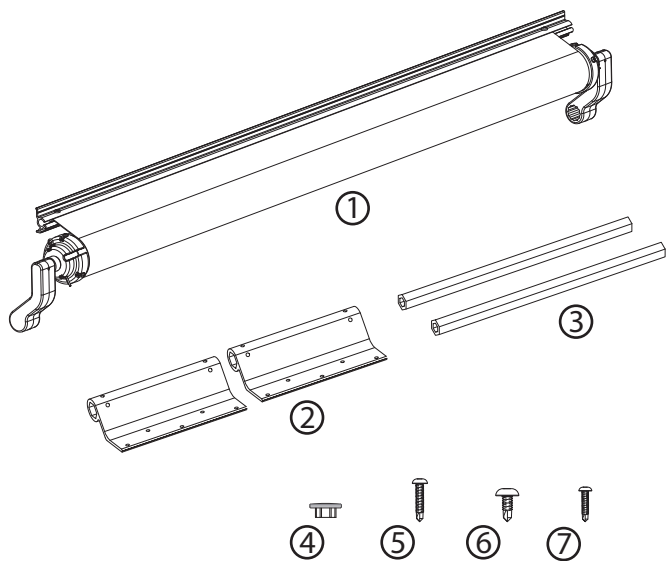
## ***RP-SAWN-FRM***

### *Slideout Awning*

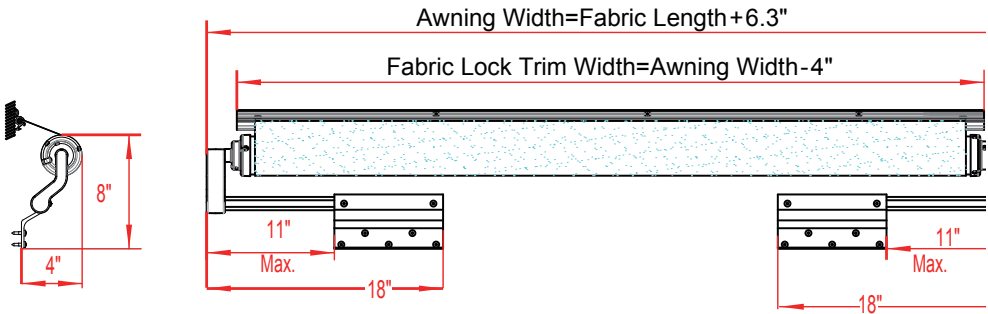
### *Installation Instructions*



# Contents



1	Slide-out awning
2	Brackets (2)
3	Hex shaped connecting rods (2)
4	Plastic plugs (2)
5	5.5x22 Pan head self-drilling screws (11)
6	3.9x13 Pan head self-drilling screws (9)
7	4.2x32 Pan head self-drilling screws (7-12)



# Preparation

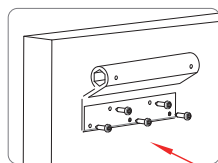
Prepare tools and materials such as ladders, tape measures, markers, and sealants. Before installation, ensure that the walls of your slide box have a backer within the structure of the wall and have sufficient weight bearing capacity.

## Installation

**Attention: Please make sure the slide out is closed before installation.**

### Step 1

Position the left and right mounting bracket according to the size of the box and then fix it with the provided 5.5x22 pan head self-drilling screws.

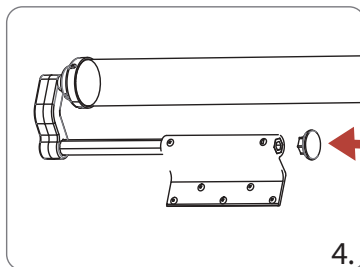
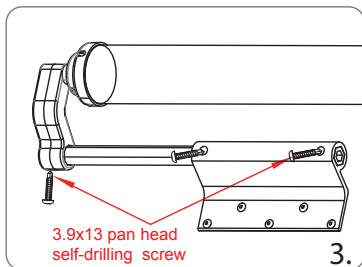
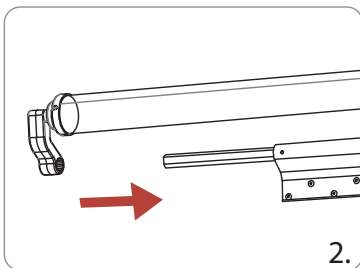
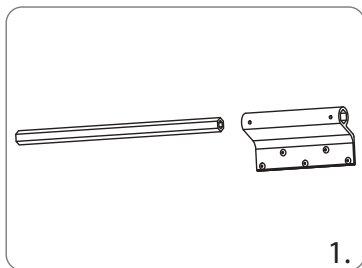


5.5x22 pan head  
self-drilling screws

### Step 2

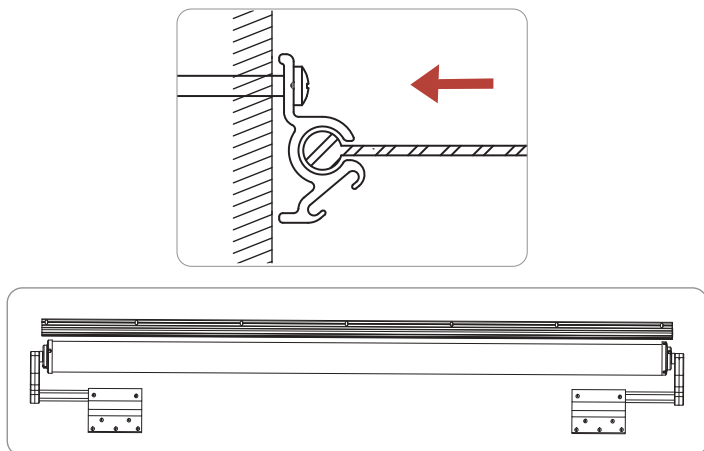
Connect rods, mounting brackets, and spring reel bracket connection.

1. Insert the connecting rod into the left mounting bracket.
2. Adjust the spring reel bracket to an appropriate angle and slide it onto the connecting rod.
3. Do the same for the left and right ends.
4. After confirming the angle and position, secure them with the provided 3.9x13 pan head self-drilling screws.
5. Finish connecting rod with plastic plug.



### Step 3

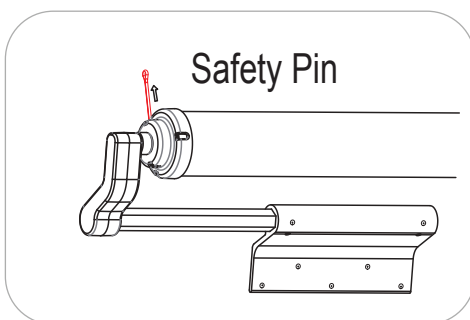
Position the awning rail along the line where the roof and wall meet, or a minimum of 3 inches above the upper edge of the slide out room. Once marked, attach them to the body and secure them with multiple 4.2x32 pan head self-drilling screws.



### Step 4

After completing the above steps, remove the spring safety pin at both ends of the reel end cover.

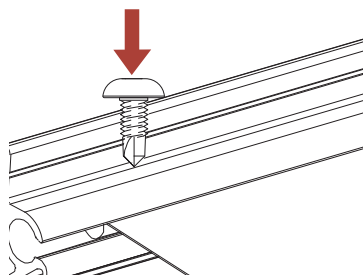
**Attention: There is tension in the springs of this awning. Do not release the safety pins before this step when installing the awning. Releasing the pin before then may result in injury. Keep the pins for future use and maintenance.**



### Step 5

After completing step 4, open and close the slide out box to test if the awning is working well. If the awning and awning fabric are working properly, then the installation was successful. If the fabric is not centered, pull the fabric to the correct position on the rail track and lock in place with the 3.9x13 Pan head self-drilling screws.

After all steps are completed, use sealant around the rail track to prevent water leakage or damage.





# Maintenance and care

## Awning care and maintenance

Regularly check if the awning fasteners are kept tight. If they are loose, tighten all fasteners. Periodically clean the awning fabric and arms.

## How to clean awning fabric

Monthly, rinse off the awning fabric with clean water and thoroughly clean the fabric with a soft brush and warm water every one or two years.

Note: When you clean the fabric, only use natural soap and clean water and make sure ALL of the cleaner is rinsed off after cleaning. Never use detergent, oil-based cleaners, or any caustic, granulate, or abrasive type cleaners.

**Air-dry. DON'T roll up the awning until the fabric is completely dry.**

Vinyl fabric offers the advantage of durability and water resistance. Wrinkling may be more noticeable when retracted and after prolonged periods of storage. In warm weather, open it up for a period of time to minimize the wrinkling. Leave the awning open during warm weather to minimize the wrinkling over time.

## Precautions:

- 1.DO NOT** use insecticides or other sprays near the awning fabric. These could cause stains and could adversely affect the fabric's ability to repel water.
- 2.DO NOT** expose awning to adverse environmental conditions, corrosive agents, or other harmful conditions. In the event of high winds, storms, and other adverse weather conditions, roll up your awning to protect it from these conditions.
- 4.NEVER** close the awning for storage when wet. The combination of moisture and dirt could result in mildew, discoloration, and stains. If it is necessary to roll up the awning while it's wet, make sure you roll it out and let it dry as soon as possible before rolling up again.
- 5.DO NOT** allow dirt, leaves, or other debris to accumulate on the awning, as this could cause abrasion and stains. Mildew could grow on dirt and organic debris, causing permanent discoloration, stains, and odors to awning fabric.
- 6.DO NOT** use strong chemicals or abrasives to clean awning or awning assembly. To prevent damage to the surface of the protective layer, a neutral detergent can be used.
- 7.NEVER** leave the awning open while traveling or moving your RV. Make sure ALL attachments are secure.

## Warranty Information

RecPro Awning Assemblies are covered under warranty for a period of 1 year and includes replacement or refunds for shipping or manufacturing errors. Shipping damage is covered for 30 days after receiving the product. Make sure to inspect the unit when it arrives for shipping damage. Damage from incorrect use or disregarding the above precautions is not covered under warranty.



806 S. Division St.  
Bristol, IN 46507  
**(574) 848-0405**  
[info@recpro.com](mailto:info@recpro.com)