

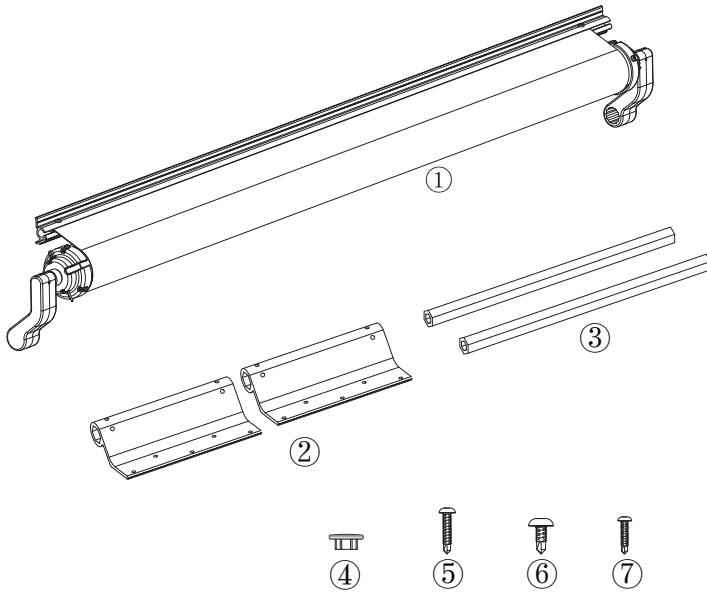
# RECPRO®

## *RP-SAWN-FRM Slideout Awning Installation Instructions*

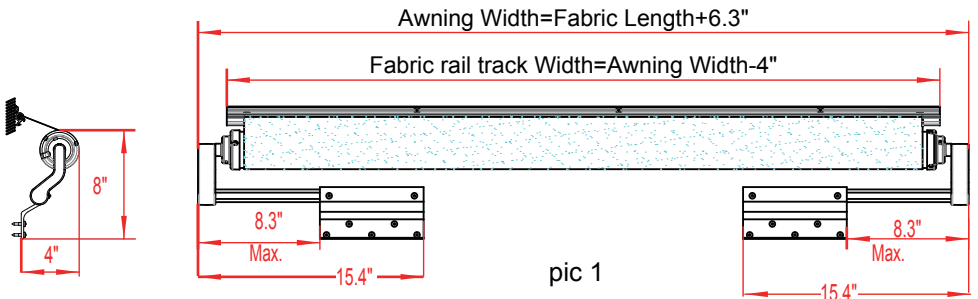




# Contents



Number	Name	Quantity
		< 4M
①	Slide out awning	1
②	Brackets	2
③	Hex shaped connecting rods	2
④	plastic plug	2
⑤	Φ5.5x22 pan head self-Drilling screw	11
⑥	Φ3.9x13 pan head self-Drilling screw	9
⑦	Φ4.2x32 pan head self-Drilling screw	7~12



# Preparation

Prepare tools and materials such as ladders, riveting gun, tape measures, markers, and sealants. Before installation, ensure that the walls of your slide box have a backer within the structure of the wall and have sufficient weight bearing capacity.

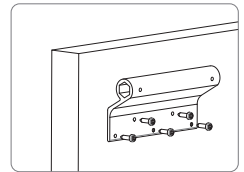
# Installation



Please make sure the slide out is closed before installation.

## Step 1

Position the left and right mounting bracket according to the size of the box (Pic 1) and then fix it with the provided  $\Phi 5.5 \times 22$  pan head self-Drilling screw.



pic 2

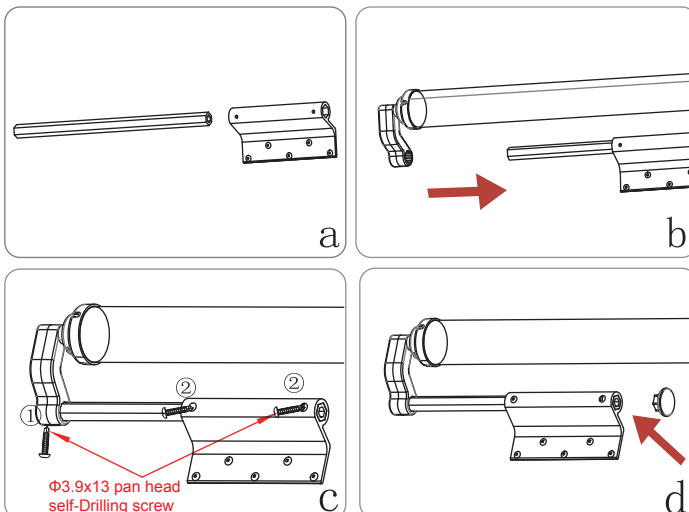
## Step 2

Connect rods, mounting brackets, and spring reel bracket connection.

- Insert the connecting rod into the left mounting bracket.
- Adjust the spring reel bracket to an appropriate angle and slide it into the connecting rod.

**Notice:** Do the same for the left and right ends.

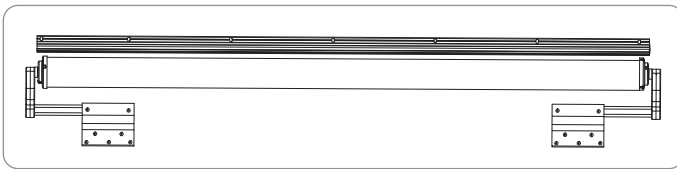
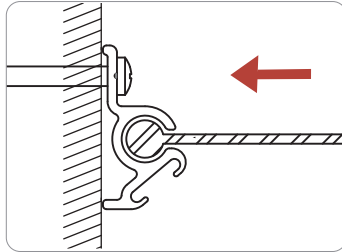
- After confirming the angle and position, secure them with the provided  $\Phi 3.9 \times 13$  pan head self-Drilling screw for c-①②.
- Finish connecting rod with plastic plug.



pic 3

### Step 3

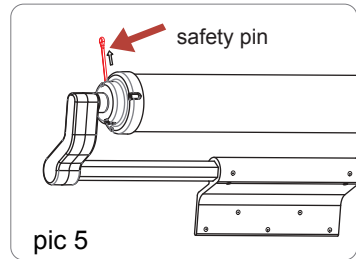
Position the awning rail along the line where the roof and wall meet (Pic 1), or a minimum of 3 inches above the upper edge of the slide out room. Once marked, attach them to the body and secure them with multiple  $\Phi 4.2 \times 32$  pan head self-Drilling screw.



pic 4

### Step 4

After completing the above steps, remove the spring safety pin at both ends of the reel end cover, as shown in pic 5.



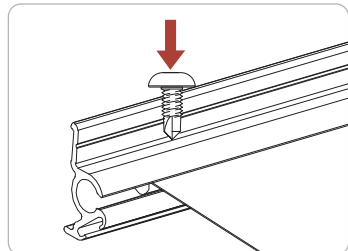
pic 5

**WARNING** There is spring got tensioned in our awning, please do not release the safety pin when install awning, people may got hurts, after you take out the safety pin, please keep it well for future use.



### Step 5

After completing step 4, open and close the slide out box to test if the awning is working well. If the awning and awning fabric are working properly, then the installation was successful. If the fabric is not centered, pull the fabric to the correct position on the rail track and fix it with  $\Phi 3.9 \times 13$  mm pan head self-Drilling screw. After all steps are completed, use sealant around the rail track and bracket to prevent water leakage or damage.



pic 6

# Maintenance and care

## Awning care and maintenance

Regularly check if the awning fasteners are kept tight. If they are loose, tighten all fasteners. Periodically clean the awning fabric and arms.

## How to clean awning fabric

Monthly, flush off the awning fabric with clean water and thoroughly clean the fabric with a soft brush and warm water every one or two years.

Note: When you clean the fabric only use natural soap and clean water and make sure ALL of the cleaner is rinsed off after cleaning. Never use detergent, oil-based cleaners, or any caustic, granulate, or abrasive type cleaners.

**Air-dry. DON'T roll up the awning until the fabric is completely dry.**

Vinyl fabric offers the advantage of durability and water resistance. Wrinkling may be more noticeable when retracted and after prolonged periods of storage. In warm weather, open it up for a period of time to minimize the wrinkling. Leave the awning open during warm weather to minimize the wrinkling over time.

## Precautions:

- 1.DO NOT** use insecticides or other sprays near the awning fabric. These could cause stains and could adversely affect the fabric's ability to repel water.
- 2.DO NOT** expose awning to adverse environmental conditions, corrosive agents, or other harmful conditions. In the event of high winds, storms, and other adverse weather conditions, roll up your awning to protect it from these conditions.
- 4.NEVER** close the awning for storage when wet. The combination of moisture and dirt could result in mildew, discoloration, and stains. If it is necessary to roll up the awning while it's wet, make sure you roll it out and let it dry as soon as possible before rolling up again.
- 5.DO NOT** allow dirt, leaves, or other debris to accumulate on the awning, as this could cause abrasion and stains. Mildew could grow on dirt and organic debris, causing permanent discoloration, stains, and odors to awning fabric.
- 6.DO NOT** use strong chemicals or abrasives to clean awning or awning assembly. To prevent damage to the surface of the protective layer, a neutral detergent can be used.
- 7.NEVER** leave the awning open while traveling or moving your RV. Make sure ALL attachments are secure.

## Warranty Information

RecPro Awning Assemblies are covered under warranty for a period of 1 year and includes replacement or refunds for shipping or manufacturing errors. Shipping damage is covered for 30 days after receiving the product. Make sure to inspect the unit when it arrives for shipping damage. Damage from incorrect use or disregarding the above precautions is not covered under warranty.



## RecPro® Slideout awning Installation and Owner's Manual

### Troubleshooting

RecPro® Slideout awning Topper Troubleshooting Chart	
What's Happening?	What Should Be Done?
Rub marks appear on the fabric.	Check that there is no debris in the track where fabric goes into the case.
Fabric sags or is loose.	Check tension on springs.
	Make sure the end caps are properly secured.
Fabric will not roll up.	Check tension on springs.
	Make sure there are no debris or foreign objects in the fabric opening or case.
Fabric will not unroll.	Make sure the spring clips that lock the tension for install have been removed from both ends of the end caps.
Fabric appears to roll up at an angle.	Make sure the rail that is mounted to the unit is square with the main housing of the slideout awning topper.
	Make sure fabric is cut square.

806 S. Division St.  
Bristol, IN 46507  
**(574) 848-0405**  
info@recpro.com

**REC PRO**<sup>®</sup>



806 S. Division St.  
Bristol, IN 46507  
**(574) 848-0405**  
info@recpro.com